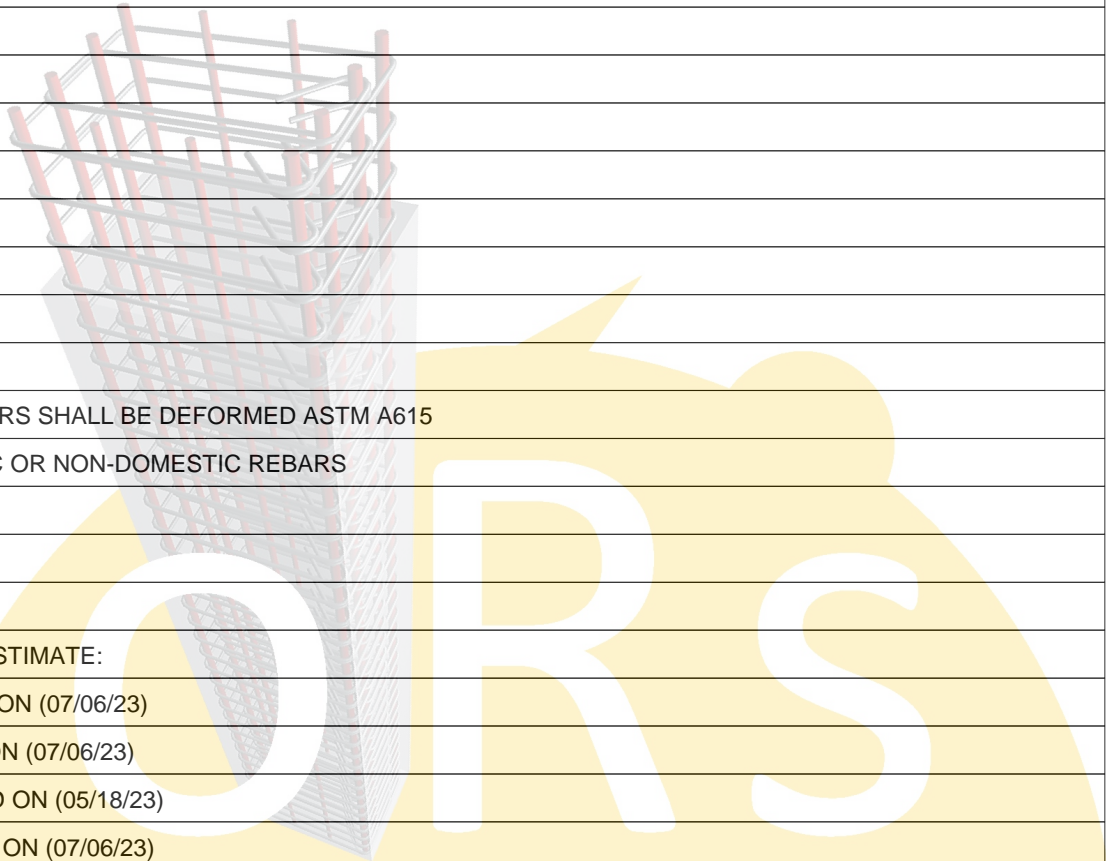


Bid Date -

**** ESTIMATING BAR LIST ****

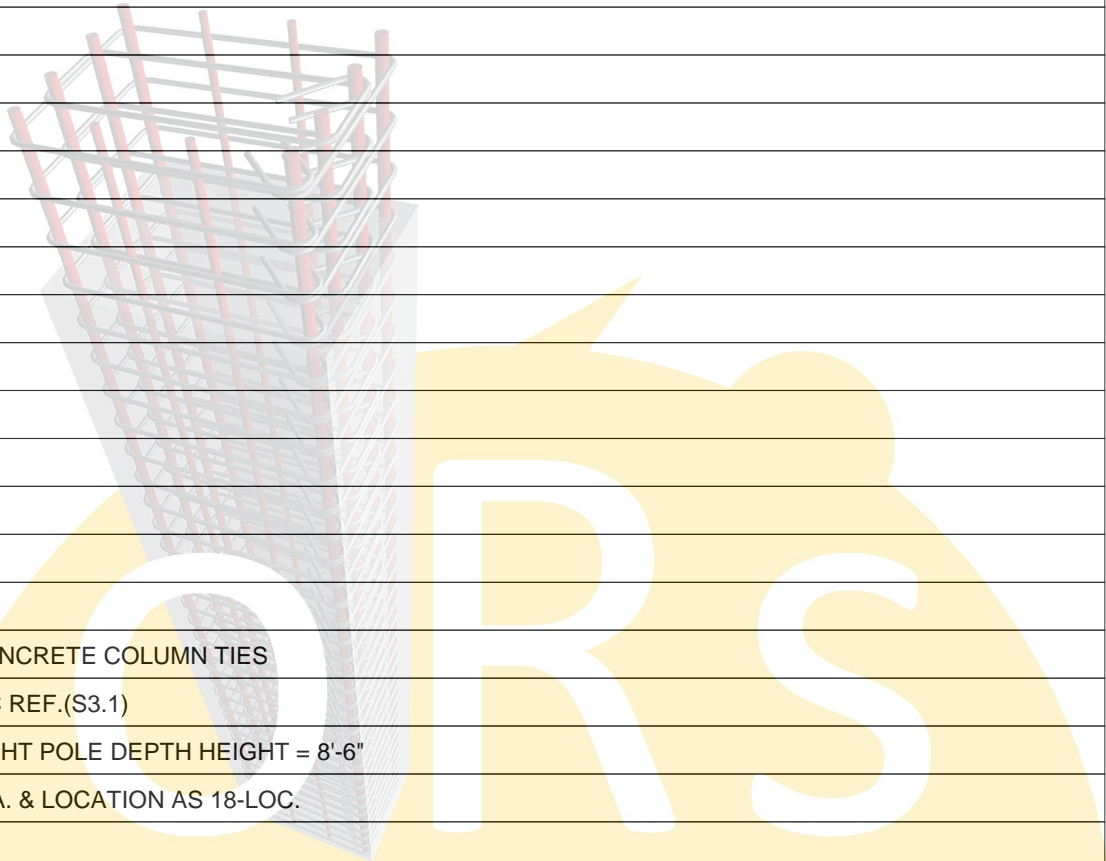
LINE	LA	EP	A/D	STRUCTURE	MULT	REQ	CODE	+	X	QTY	SZ/GR	LENGTH	B	COMMENT	LINE LB
1				CONCRETE & CMU WALL											
2															
3				VALLEYDALE APARTMENTS											
4				-											
5															
6				ARCHITECT: -											
7				PHONE :-											
8				FAX :-											
9															
10				STRUCTURE: -											
11				PHONE :-											
12				FAX :-											
13															
14				REBAR:											
15				1.ALL REINFORCING BARS SHALL BE DEFORMED ASTM A615											
16				GRADE A60 DOMESTIC OR NON-DOMESTIC REBARS											
17															
18				ADDENDUMS: NONE											
19															
20				DRAWING USED FOR ESTIMATE:											
21				1.A0.1 TO A7.3b DATED ON (07/06/23)											
22				2.E0.1 TO E6.4 DATED ON (07/06/23)											
23				3.ID0.0 TO ID10.4 DATED ON (05/18/23)											
24				4.M0.1 TO M6.1c DATED ON (07/06/23)											
25				5.P0.1 TO P6.2 DATED ON (07/06/23)											
26				6.S0.1 TO S8.3 DATED ON (07/06/23)											
27				7.C1 TO C13.2 DATED ON (06/21/23)											
28															
29				EXCLUSIONS:											
30				1.REBAR WELDED TO STRUCTURAL STEEL											
31				2.ALL SMOOTH DOWELS											



Bid Date -

** ESTIMATING BAR LIST **

LINE	LA	EP	A/D	STRUCTURE	MULT	REQ	CODE	+	X	QTY	SZ/GR	LENGTH	B	COMMENT	LINE LB
32				3.REF.(S3.2) (NOT USED)											
33				4.RETAINING WALL @POOL HOUSE SECTION(1&2/S8.2)											
34				(NO WALL HEIGHT & NO CLEAR PLAN DETAILS)											
35				5.SITWORK (EXCEPT LIGHT POLE & CONCRETE STAIR)											
36															
37				INCLUSIONS:											
38				1.SPREAD FOOTING											
39				2.CONCRETE COLUMN											
40				3.WALL FOOTING											
41				4.MAT FOOTING											
42				5.ELEVATOR PIT											
43				6.CONCRETE WALL											
44				7.SLAB ON GRADE											
45				8.CONCRETE BEAM											
46				9.CMU WALL											
47				10.UPPER LEVEL											
48				11.SITWORK											
49															
50				ASSUMPTIONS:											
51				1.WE ASSUMED ALL CONCRETE COLUMN TIES											
52				REINF. AS #3 @12" O.C REF.(S3.1)											
53				2.WE ASSUMED ALL LIGHT POLE DEPTH HEIGHT = 8'-6"											
54				AND DIAMETER 24" DIA. & LOCATION AS 18-LOC.											
55				BUILDING-1											
56				3.WE ASSUMED ELEVATOR PIT CONCRETE WALL REINF. AS											
57				#5 @18" VERT EF & #4 @14" HOR EF (MARK-SW2)											
58				4.WE ASSUMED STAIR CASE CONCRETE WALL REINF. AS											
59				#5 @18" VERT EF & #4 @14" HOR EF (MARK-SW2)											
60				5.WE ASSUMED STAIR SECTION(11/S2.3) REINF. AS											
61				#4 @12" EW											
62				6.WE ASSUMED REF.(10/S2.2) RETAINING WALL											



Bid Date -

** ESTIMATING BAR LIST **

LINE	LA	EP	A/D	STRUCTURE	MULT	REQ	CODE	+	X	QTY	SZ/GR	LENGTH	B	COMMENT	LINE LB
63				LENFGTH AS (90 LFT)											
64				BUILDING-2											
65				7.WE ASSUMED ELEVATOR PIT MAT FTG. & CONC. WALL											
66				REINF. AS #5 @12" EW T&B & #5 @12" EW EF											
67				8.WE ASSUMED ELEVATOR PIT CONCRETE WALL ESTIMATE											
68				AS BELOW FINISH FLOOR 0'-0" AND CMU WALL START											
69				AS ABOVE FINISH FLOOR 0'-0"											
70															
71				NOTES:											
72				1.REBAR ACCESSORIES: AS PER STANDARD PRACTICE											
73															
74				BUILDING - 1										BUILDING - 1	
75				>SPREAD FTG.										SPREAD FOOTING	
76				REF.SHEET.-(S1.11)											
77				MARK = F5.0 (1-LOC.)											
78									2	6	#5	5-00		6-#5 EW BOT	63
79				MARK = F6.0 (9-LOC.)											
80						9			2	9	#5	6-00		9-#5 EW BOT	1014
81				MARK = F7.0 (10-LOC.)											
82						10			2	8	#6	7-00		8-#6 EW BOT	1682
83				MARK = F8.0 (1-LOC.)											
84									2	9	#6	8-00		9-#6 EW BOT	216
85				MARK = F9.0 (12-LOC.)											
86						12			2	9	#7	9-00		9-#7 EW BOT	3974
87				MARK = F10.0 (7-LOC.)											
88						7			2	10	#7	10-00		10-#7 EW BOT	2862
89															
90				>CONC.COLUMN										CONCRETE COLUMN	
91				REF.SHEET.-(2/S3.1)											
92				MARK = C1 (H=VARIES) (40-LOC.)											
93									40	4	#9	8-02	H	4-#9 DWL	4443

Bid Date -

** ESTIMATING BAR LIST **

LINE	LA	EP	A/D	STRUCTURE	MULT	REQ	CODE	+	X	QTY	SZ/GR	LENGTH	B	COMMENT	LINE LB
94									40	4	#9	14-00	H	4-#9 VERT	7616
95									40	4	#9	7-07	H	4-#9 DWL TOP	4125
96									40	15	#3	6-04	L	#3 @12" TIES	1429
97									40	6	#3	6-04	L	6-#3 TOP TIES	572
98															
99				>WALL FOOTING			WALL FOOTING								
100				REF.(S1.11 & 1,4,5/S2.2) (712 LFT)											
101									20	2	#4	40-00		2-#4 CONT	1069
102									44	2	#4	4-10	L	2-#4 COR	284
103										430	#4	4-04	L	#4 @18" D/V	1245
104				REF.(7/S2.2) (50 LFT)											
105									2	2	#5	40-00		2-#5 CONT	167
106									2	50	#5	2-10	H	#5 @12" DWL EF	296
107				REF.(8/S2.2) MARK-WF2.5 & WF2.0 (1205 LFT)											
108									6	2	#5	40-00		2-#5 CONT	501
109									6	2	#5	6-00	H	2-#5 COR	75
110										166	#5	5-00	H	#5 @14" DWL IF	866
111										130	#5	5-00	H	#5 @18" DWL OF	678
112				REF.(6/S2.3) (96 LFT)											
113									3	2	#4	40-00		2-#4 CONT BOT	160
114									3	5	#4	40-00		5-#4 CONT TOP	401
115									2	2	#4	4-10	L	2-#4 COR BOT	13
116									2	5	#4	4-10	L	5-#4 COR TOP	32
117										90	#5	7-00		#5 @14" TRANS TOP	657
118										135	#5	7-00	H	#5 @8" DWL IF	986
119				REF.(9/S2.2) (204 LFT)											
120									6	2	#4	40-00		2-#4 CONT BOT	321
121									6	5	#4	40-00		5-#4 CONT TOP	802
122									2	2	#4	4-10	L	2-#4 COR BOT	13
123									2	5	#4	4-10	L	5-#4 COR TOP	32
124										205	#5	7-00		#5 @12" TRANS TOP	1497

Bid Date -

** ESTIMATING BAR LIST **

LINE	LA	EP	A/D	STRUCTURE	MULT	REQ	CODE	+	X	QTY	SZ/GR	LENGTH	B	COMMENT	LINE LB
125										280	#5	7-00	H	#5 @8" DWL IF	2044
126 REF.(7,8,9/S2.3) (405 LFT)															
127									11	2	#4	40-00		2-#4 CONT BOT	588
128									11	4	#4	40-00		4-#4 CONT TOP	1176
129									28	2	#4	4-10	L	2-#4 COR BOT	181
130									28	4	#4	4-10	L	4-#4 COR TOP	362
131										410	#5	3-06		#5 @12" TRANS TOP	1497
132										320	#5	5-02	H	#5 @12" DWL	1724
133 REF.(10,11/S2.3) (126 LFT)															
134									4	2	#4	40-00		2-#4 CONT	214
135									12	2	#4	4-10	L	2-#4 COR	77
136										90	#5	3-04	H	#5 @18" DWL	313
137 REF.(8,10/S2.3) (134 LFT)															
138						4			2	3	#6	40-00		3-#6 CONT T&B	1442
139						8			2	3	#6	7-02	H	3-#6 COR T&B	517
140										135	#3	8-00	L	#3 @12" STIRR	406
141										135	#4	4-00	L	#4 @12" DWL	361
142									9	2	#5	3-00	H	2-#5 DWL	56
143															
144 REF.(10/S2.2) (90 LFT) (H=10'-3")															
145									3	8	#6	40-00		8-#6 K-TOP	1442
146									3	8	#6	7-02	H	8-#6 K-TOP COR	258
147									3	3	#6	40-00		3-#6 J-BOT	541
148									3	3	#6	7-02	H	3-#6 J-BOT COR	97
149										90	#5	9-09		#5 @12" P-TOP	915
150										138	#5	6-00	H	#6 @8" O-DWL	864
151										90	#4	2-04	L	#4 @12" DWL	140
152															
153				>MAT FOOTING										MAT FOOTING	
154 STAIR CASE															
155 REF.(S1.11 & 4/S2.3)															

Bid Date -

** ESTIMATING BAR LIST **

LINE	LA	EP	A/D	STRUCTURE	MULT	REQ	CODE	+	X	QTY	SZ/GR	LENGTH	B	COMMENT	LINE LB	
156 12" THICK MAT (475 SQ.FT)																
157										32	#6	40-00		#6 @12" EW BOT	1923	
158										31	#5	40-00		#5 @12" EW TOP	1293	
159										35	#4	5-08	L	#4 @48" STANDEE	132	
160									2	65	#5	5-00	H	#5 @18" DWL EF	678	
161																
				>ELEVATOR PIT												ELEVATOR PIT
163 REF.(S1.31 & 5/S2.3) (MARK=SW2)																
164 18" THICK MAT (380 SQ.FT) (38 LFT)																
165										25	#5	40-00		#5 @12" EW TOP	1043	
166										25	#8	40-00		#8 @12" EW BOT	2670	
167										26	#4	6-08	L	#4 @48" STANDEE	116	
168										60	#5	5-06	H	#5 @18" DWL EF	344	
169									2	3	#4	6-00	L	3-#4 BENT EW	24	
170																
				>CONC. WALL												CONCRETE WALL
172 REF.(1,4&5/S2.2) (630 LFT)																
173						18			2	1	#4	40-00		1-#4 HOR T&B	962	
174						44			2	1	#4	4-10	L	1-#4 HOR COR T&B	284	
175										420	#4	4-00		#4 @24" CMU DWL	1122	
176 REF.(7/S2.2) (50 LFT)																
177									2	50	#5	4-00		#5 @12" VERT EF	417	
178									2	4	#4	40-00		#4 @12" HOR	214	
179										30	#4	4-06	L	#4 @24" DWL	90	
180 REF.(8/S2.2) (H=VARIES) (192 LFT)																
181										106	#5	12-02		#5 @14" VERT IF	1345	
182										80	#5	12-02		#5 @18" VERT OF	1015	
183										60	#5	14-08		#5 @14" VERT IF	918	
184										50	#5	14-08		#5 @18" VERT OF	765	
185						6			2	10	#4	40-00		#4 @18" HOR EF	3206	
186						4			2	10	#4	4-10	L	#4 @18" HOR COR EF	258	

Bid Date -

** ESTIMATING BAR LIST **

LINE	LA	EP	A/D	STRUCTURE	MULT	REQ	CODE	+	X	QTY	SZ/GR	LENGTH	B	COMMENT	LINE LB
187										195	#4	4-00	L	#4 @12" DWL	521
188										100	#4	7-00	L	#4 @24" DWL	468
189									4	2	#5	3-00	H	2-#5 DWL	25
190 REF.(6/S2.3) (H=11'-2") (89 LFT)															
191										80	#5	11-02		#5 @14" VERT IF	932
192										92	#6	11-02		#6 @12" VERT OF	1543
193										92	#4	4-00	L	#4 @12" DWL	246
194									3	2	#5	3-00	H	2-#5 DWL	19
195						4				2	8 #4	40-00		#4 @18" HOR EF	1710
196						4				2	8 #4	4-10	L	#4 @18" HOR COR EF	207
197 REF.(9/S2.2) (H=12'-0") (185 LFT)															
198										160	#5	12-00		#5 @14" VERT IF	2003
199										160	#6	12-00		#6 @14" VERT OF	2884
200										186	#4	4-00	L	#4 @12" DWL	497
201									13	2	#5	3-00	H	2-#5 DWL	81
202						5				2	9 #4	40-00		#4 @18" HOR EF	2405
203						3				2	9 #4	4-10	L	#4 @18" HOR COR EF	174
204 REF.(7,8,9/S2.3) (H=VARIES) (316 LFT)															
205										320	#5	6-00		#5 @12" VERT	2003
206									9	7	#4	40-00		#4 @12" HOR	1683
207									28	7	#4	4-10	L	#4 @12" COR	633
208										320	#4	4-00	L	#4 @12" TOP DWL	855
209									18	2	#5	3-00	H	2-#5 DWL	113
210 REF.(10,11/S2.3) (126 LFT)															
211										90	#5	3-00		#5 @18" VERT	282
212									4	3	#4	40-00		#4 @18" HOR	321
213									12	3	#4	4-10	L	#4 @18" HOR COR	116
214										130	#4	4-00	L	#4 @12" DWL	347
215 REF.(12/S2.3) (68 LFT)															
216										50	#5	3-00		#5 @18" VERT	156
217									2	3	#4	40-00		#4 @18" HOR	160

Bid Date -

** ESTIMATING BAR LIST **

LINE	LA	EP	A/D	STRUCTURE	MULT	REQ	CODE	+	X	QTY	SZ/GR	LENGTH	B	COMMENT	LINE LB
218										35	#4	4-00	L	#4 @24" DWL	94
219															
220 CONCRETE SHEAR WALL															
221 REF.(4/S2.3) (STAIR WALL)															
222 MARK=SW2 (H=14'-0") (90 LFT)															
223									2	65	#5	14-00		#5 @18" VERT EF	1898
224						3			2	13	#4	40-00		#4 @14" HOR EF	2084
225						8			2	13	#4	4-10	L	#4 @14" COR EF	672
226									45	13	#4	1-06	L	#4 @14" CROSS TIES	586
227 REF.(5/S2.3) (ELEVATOR WALL)															
228 MARK=SW2 (H=18'-0") (78 LFT)															
229									2	60	#5	18-00		#5 @18" VERT EF	2253
230						2			2	17	#4	40-00		#4 @14" HOR EF	1817
231						8			2	17	#4	4-10	L	#4 @14" COR EF	878
232									48	17	#4	1-06	L	#4 @14" CROSS TIES	818
233															
234 REF.(10/S2.2) (90 LFT) (H=10'-3")															
235										70	#5	10-03		#5 @16" M-VERT	748
236										60	#5	10-03		#5 @18" N-VERT	641
237						3			2	11	#4	40-00		#4 @12" HOR EF-L	1764
238						2			2	11	#4	4-10	L	#4 @12" HOR COR EF-L	142
239									3	2	#4	40-00		2-#4 HOR	160
240									2	2	#4	4-10	L	2-#4 HOR COR	13
241															
242														>SOG SLAB ON GRADE	
243 REF.SHEET.-(S1.11)															
244 4" THICK SOG															
245 AREA = 26440 SQ.FT															
246										945	#3	40-00		#3 @18" EW	14213
247															
248 REF.SHEET.-(S1.12)															

Bid Date -

** ESTIMATING BAR LIST **

LINE	LA	EP	A/D	STRUCTURE	MULT	REQ	CODE	+	X	QTY	SZ/GR	LENGTH	B	COMMENT	LINE LB
249	4" THICK CONCRETE SLAB														
250	AREA = 5000 SQ.FT														
251										182	#3	40-00		#3 @18" EW	2737
252															
253	REF.SHEET.-(S1.12)														
254	7" THICK CONCRETE SLAB														
255	AREA = 4820 SQ.FT														
256										140	#5	40-00		#5 @12" SW	5841
257										95	#3	40-00		#3 @18" LW	1429
258															
259	REF.(5/S2.2) (80 LFT)														
260									2	1	#4	40-00		1-#4 CONT	53
261									8	1	#4	4-10	L	1-#4 COR	26
262	REF.(7/S2.2) (50 LFT)														
263										52	#4	8-00		#4 @12" DWL	278
264	REF.(1/S2.3) (700 LFT)														
265									25	2	#4	40-00		2-#4 CONT BOT	1336
266	REF.(2/S2.3) (400 LFT)														
267						14			2	5	#6	40-00		5-#6 T&B	8411
268										250	#3	7-00	L	#3 @20" STIRR	658
269	REF.(11/S2.3) (210 SQ.FT)														
270										18	#4	40-00		#4 @12" EW	481
271										8	#3	40-00		#3 NOSING	120
272	REF.(11/S2.1) (40-LOC.)														
273									40	1	#4	8-00		1-#4 RE-ENTRANT	214
274															
275	>CMU WALL CMU WALL														
276	ELEVATOR CMU WALL (2-LOC.)														
277	REF.(S1.31 & 5/S2.3) (40 LFT) (H=VARIES)														
278					2					18	#5	91-03		#5 @32" VERT	3426
279					2					12	#4	70-01		#4 ADD'L VERT	1124

Bid Date -

** ESTIMATING BAR LIST **

LINE	LA	EP	A/D	STRUCTURE	MULT	REQ	CODE	+	X	QTY	SZ/GR	LENGTH	B	COMMENT	LINE LB
280					2					2	#5	91-03		2-#5 JAMB VERT	381
281					2	2			6	2	#5	20-00		2-#5 BB	1001
282					2	4			6	2	#5	5-00	H	2-#5 BB COR	501
283									5	1	#5	7-04	L	1-#5 LINTEL	38
284															
285	EXTERIOR CMU WALL														
286	REF.(S1.31 & 1/S2.2) (630 LFT) (H=12'-0")														
287										320	#4	16-00		#4 @24" VERT	3420
288										100	#4	16-00		#4 ADD'L VERT	1069
289									40	2	#5	20-00		2-#5 BB	1669
290									28	2	#5	5-00	H	2-#5 BB COR	292
291															
292	>UPPER LEVEL UPPER LEVEL														
293	REF.SHEET.-(4/S2.6) (60 LFT)														
294									2	2	#4	40-00		2-#4 CONT SKIN	107
295										65	#4	7-10	L	#4 @12" STIRR	340
296	REF.(5/S2.3)														
297										60	#5	5-00	H	#5 @32" CMU DWL	313
298	REF.(2/S2.5) (5-LOC.)														
299									5	14	#5	6-10	L	#5 @12" ADD'L TOP	499
300									5	12	#5	18-00		#5 @9" ADD'L BOT	1126
301															
302	REF.SHEET.-(S1.12)														
303										12	#6	24-00		12-#6 BOT	433
304										16	#6	27-00		16-#6 BOT	649
305									10	2	#5	14-00	H	2-#5 TOP	292
306										2	#5	35-00	H	2-#5 @12" TOP	73
307										2	#5	35-06	H	2-#5 @12" TOP	74
308									3	2	#5	30-00	H	2-#5 @12" TOP	188
309									2	11	#5	28-00	H	11-#5 @12" TOP	642
310										11	#5	29-00	H	11-#5 @12" TOP	333

Bid Date -

** ESTIMATING BAR LIST **

LINE	LA	EP	A/D	STRUCTURE	MULT	REQ	CODE	+	X	QTY	SZ/GR	LENGTH	B	COMMENT	LINE LB
311									4	11	#5	19-00		11-#5 @10" TOP	872
312										12	#5	10-00	H	12-#5 @8" TOP	125
313										12	#5	19-00		12-#5 @8" TOP	238
314										12	#5	22-00		12-#5 @10" TOP	275
315										12	#5	30-06	H	12-#5 @12" TOP	382
316										12	#5	31-00	H	12-#5 @12" TOP	388
317										4	#5	31-00	H	4-#5 @12" TOP	129
318										4	#5	28-00	H	4-#5 @12" TOP	117
319									2	4	#5	28-06	H	4-#5 @10" TOP	238
320									3	4	#5	14-00	H	4-#5 @12" TOP	175
321										4	#5	35-00	H	4-#5 @8" TOP	146
322									2	4	#5	12-00	H	4-#5 @12" TOP	100
323										4	#5	16-00		4-#5 @10" TOP	67
324									2	4	#5	30-00	H	4-#5 @12" TOP	250
325										2	#5	14-00	H	2-#5 @12" TOP	29
326										4	#5	35-00	H	4-#5 @12" TOP	146
327									6	5	#5	12-00	H	5-#5 TOP	375
328										5	#5	7-00	H	5-#5 @10" TOP	37
329										5	#5	17-00		5-#5 @10" TOP	89
330									2	5	#5	16-00		5-#5 @10" TOP	167
331										5	#5	33-00		5-#5 @8" TOP	172
332									5	5	#5	19-00		5-#5 @10" TOP	495
333										5	#5	31-00	H	5-#5 @12" TOP	162
334										5	#5	42-06	H	5-#5 @10" TOP	222
335										6	#5	19-00	H	6-#5 @12" TOP	119
336										6	#5	28-00	H	6-#5 @12" TOP	175
337										6	#5	30-06	H	6-#5 @10" TOP	191
338										6	#5	35-00	H	6-#5 @12" TOP	219
339										7	#5	8-06	H	7-#5 @12" TOP	62
340										7	#5	19-00		7-#5 @10" TOP	139
341										7	#5	12-00	H	7-#5 TOP	88

Bid Date -

** ESTIMATING BAR LIST **

LINE	LA	EP	A/D	STRUCTURE	MULT	REQ	CODE	+	X	QTY	SZ/GR	LENGTH	B	COMMENT	LINE LB
342										7	#5	14-00	H	7-#5 @10" TOP	102
343										7	#5	22-00		7-#5 @10" TOP	161
344										7	#5	28-06		7-#5 @10" TOP	208
345										7	#5	30-00	H	7-#5 @12" TOP	219
346										7	#5	35-00	H	7-#5 @12" TOP	256
347										2	#5	29-06	H	2-#5 @12" TOP	62
348									2	2	#5	30-06	H	2-#5 @12" TOP	127
349										6	#5	31-00	H	6-#5 @12" TOP	194
350										6	#5	12-00	H	6-#5 @10" TOP	75
351										6	#5	30-00		6-#5 @12" TOP	188
352									2	6	#5	19-00		6-#5 @12" TOP	238
353										10	#5	30-06	H	10-#5 @10" TOP	318
354									2	10	#5	36-06	H	10-#5 @12" TOP	761
355									3	10	#5	19-00		10-#5 @10" TOP	595
356										10	#5	28-00	H	10-#5 @10" TOP	292
357										10	#5	31-00	H	10-#5 @10" TOP	323
358										10	#5	35-00	H	10-#5 @12" TOP	365
359										10	#5	30-00	H	10-#5 @12" TOP	313
360										15	#5	28-06	H	15-#5 @6" TOP	446
361										15	#5	28-06	H	15-#5 @12" TOP	446
362										15	#5	31-00	H	15-#5 @8" TOP	485
363										13	#5	30-06	H	13-#5 @12" TOP	414
364										8	#5	28-00	H	8-#5 @10" TOP	234
365									2	8	#5	28-06	H	8-#5 @12" TOP	476
366										8	#5	57-00		8-#5 @12" TOP	476
367									3	8	#5	19-00		8-#5 @12" TOP	476
368										8	#5	30-00	H	8-#5 @12" TOP	250
369										8	#5	31-06	H	8-#5 @12" TOP	263
370										8	#5	30-06	H	8-#5 @6" TOP	254
371										8	#5	14-00	H	8-#5 @12" TOP	117
372										9	#5	19-00		9-#5 @10" TOP	178

Bid Date -

** ESTIMATING BAR LIST **

LINE	LA	EP	A/D	STRUCTURE	MULT	REQ	CODE	+	X	QTY	SZ/GR	LENGTH	B	COMMENT	LINE LB
373										9	#5	35-06	H	9-#5 @12" TOP	333
374										17	#5	6-00	H	17-#5 @12" TOP	106
375										6	#5	57-00		6-#5 @12" TOP	357
376										13	#5	19-00		13-#5 @8" TOP	258
377									5	13	#5	19-00		13-#5 @12" TOP	1288
378										13	#5	35-00		13-#5 @12" TOP	475
379										19	#5	10-00	H	19-#5 @12" TOP	198
380										20	#5	29-00	H	20-#5 @8" TOP	605
381										22	#5	6-06	H	22-#5 @12" TOP	149
382										2	#7	8-00	H	2-#7 @8" TOP	33
383										2	#7	32-00	H	2-#7 @10" TOP	131
384										3	#7	14-06	H	3-#7 @8" TOP	89
385										3	#7	20-00	H	3-#7 @6" TOP	123
386										3	#7	37-00	H	3-#7 @10" TOP	227
387										13	#7	30-06	H	13-#7 @9" TOP	810
388										13	#7	32-00	H	13-#7 @6" TOP	850
389									2	11	#7	21-00		11-#7 @8" TOP	944
390										11	#7	29-00	H	11-#7 @9" TOP	652
391										11	#7	32-00	H	11-#7 @10" TOP	719
392										12	#7	19-00		12-#7 @7" TOP	466
393										12	#7	8-06		12-#7 @8" TOP	208
394										12	#7	21-00		12-#7 @10" TOP	515
395										12	#7	27-00		12-#7 @6" TOP	662
396										12	#7	19-00		12-#7 @8" TOP	466
397										14	#7	29-00	H	14-#7 @9" TOP	830
398										14	#7	31-06	H	14-#7 @10" TOP	901
399										4	#7	29-06	H	4-#7 @9" TOP	241
400										4	#7	37-00	H	4-#7 @10" TOP	303
401										15	#7	29-06	H	15-#7 @10" TOP	904
402										15	#7	31-00	H	15-#7 @10" TOP	950
403										4	#7	11-00		4-#7 @10" TOP	90

Bid Date -

** ESTIMATING BAR LIST **

LINE	LA	EP	A/D	STRUCTURE	MULT	REQ	CODE	+	X	QTY	SZ/GR	LENGTH	B	COMMENT	LINE LB
404										4	#7	16-06	H	4-#7 @6" TOP	135
405										10	#7	37-00	H	10-#7 @9" TOP	756
406										14	#7	36-06	H	14-#7 @9" TOP	1044
407										14	#7	31-06	H	14-#7 @12" TOP	901
408										9	#7	8-00	H	9-#7 @6" TOP	147
409										9	#7	18-00		9-#7 @10" TOP	331
410										9	#7	30-00	H	9-#7 @6" TOP	552
411										5	#7	31-06	H	5-#7 @10" TOP	322
412										5	#7	37-00	H	5-#7 @10" TOP	378
413										6	#7	17-00		6-#7 @8" TOP	208
414									2	6	#7	21-00		6-#7 @10" TOP	515
415										6	#7	30-00	H	6-#7 @10" TOP	368
416										6	#7	32-00	H	6-#7 @10" TOP	392
417										8	#7	18-00		8-#7 @10" TOP	294
418										8	#7	30-00		8-#7 @9" TOP	491
419										8	#7	32-00	H	8-#7 @10" TOP	523
420										8	#7	37-00	H	8-#7 @10" TOP	605
421										10	#7	18-00		10-#7 @8" TOP	368
422										10	#7	19-00		10-#7 @8" TOP	388
423										10	#7	21-00		10-#7 @8" TOP	429
424										10	#7	21-00		10-#7 @10" TOP	429
425										10	#7	30-00	H	10-#7 @10" TOP	613
426										10	#7	33-00	H	10-#7 @10" TOP	675
427									10	5	#7	21-00		5-#7 @10" TOP	2146
428									10	7	#7	21-00		7-#7 @10" TOP	3005
429										7	#7	7-00	H	7-#7 TOP	100
430									2	7	#7	32-00		7-#7 @10" TOP	916
431										2	#7	31-06	H	2-#7 @10" TOP	129
432										2	#7	29-06	H	2-#7 @12" TOP	121
433										2	#7	31-06	H	2-#7 @9" TOP	129
434										6	#7	21-00		6-#7 @9" TOP	258

Bid Date -

** ESTIMATING BAR LIST **

LINE	LA	EP	A/D	STRUCTURE	MULT	REQ	CODE	+	X	QTY	SZ/GR	LENGTH	B	COMMENT	LINE LB
435										6	#7	24-00		6-#7 @10" TOP	294
436										8	#7	24-00		8-#7 @10" TOP	392
437										6	#7	29-06	H	6-#7 @10" TOP	362
438										8	#7	7-00	H	8-#7 @12" TOP	114
439									2	8	#7	21-00		8-#7 @8" TOP	687
440										8	#7	9-00	H	8-#7 @10" TOP	147
441										8	#7	21-00		8-#7 @10" TOP	343
442										8	#7	21-00		8-#7 @8" TOP	343
443										8	#7	21-00		8-#7 @9" TOP	343
444										8	#7	57-00		8-#7 @10" TOP	932
445										8	#7	32-00	H	8-#7 @10" TOP	523
446										9	#7	28-00	H	9-#7 @9" TOP	515
447										9	#7	21-00	H	9-#7 @10" TOP	386
448									2	9	#7	32-00	H	9-#7 @10" TOP	1177
449										16	#7	31-00	H	16-#7 @10" TOP	1014
450										16	#7	21-00		16-#7 @10" TOP	687
451										17	#7	59-00		17-#7 @8" TOP	2050
452										11	#7	21-00		11-#7 @6" TOP	472
453										11	#7	19-00		11-#7 @8" TOP	427
454									2	11	#7	21-00		11-#7 @8" TOP	944
455										27	#7	32-00	H	27-#7 @8" TOP	1766
456										50	#5	7-00	H	#5 @12" TOP	365
457										75	#5	6-00	H	#5 @12" TOP	469
458										12	#7	27-00		12-#7 TOP	662
459										9	#7	23-02	H	9-#7 TOP	426
460										10	#7	21-02	H	10-#7 TOP	433
461										9	#7	31-00		9-#7 TOP	570
462						2			40	4	#5	8-00		4-#5 COR T&B	2670
463						2			5	4	#5	12-00		4-#5 COR T&B	501
464															
465														REF.SHEET.-(S1.12)	

Bid Date -

** ESTIMATING BAR LIST **

LINE	LA	EP	A/D	STRUCTURE	MULT	REQ	CODE	+	X	QTY	SZ/GR	LENGTH	B	COMMENT	LINE LB
466	11" THICK CONCRETE SLAB														
467	AREA = 22650 SQ.FT														
468										1280	#6	40-00		#6 @12" EW	76902
469															
470	BUILDING-2				BUILDING-2										
471	>SPREAD FTG.				SPREAD FOOTING										
472	REFER = S-101														
473	MARK = F3.0 (8 LOC.)														
474					8				2	4	#4	3-00		4-#4 EW BOT	128
475	MARK = F4.0 (4 LOC.)														
476					4				2	6	#4	4-00		6-#4 EW BOT	128
477	MARK = F5.0 (3 LOC.)														
478					3				2	6	#5	5-00		6-#5 EW BOT	188
479	MARK = F6.0 (3 LOC.)														
480					3				2	9	#5	6-00		9-#5 EW BOT	338
481	MARK = F7.0 (2 LOC.)														
482					2				2	8	#6	7-00		8-#6 EW BOT	336
483															
484	>CONT. FTG				CONTINUOUS FOOTING										
485	REFER = 4 & 5/S2.2 (1375 LFT)														
486									42	2	#4	40-00		2-#4 CONT	2244
487										920	#4	4-10	L	#4 @18" D/V	2970
488					42				2	1	#4	40-00		1-#4 HOR T&B	2244
489										140	#3	1-06	L	#3 @24" DWL	79
490	REFER = 5/S2.2 (450 LFT)														
491									15	1	#4	40-00		1-#4 HOR	401
492															
493	ELEVATOR PIT														
494	REFER = 5/S2.3														
495	12" THICK MAT														
496	AREA = 140 SQ.FT														

Bid Date -

** ESTIMATING BAR LIST **

LINE	LA	EP	A/D	STRUCTURE	MULT	REQ	CODE	+	X	QTY	SZ/GR	LENGTH	B	COMMENT	LINE LB
497									2	11	#5	40-00		#5 @12" EW T&B	918
498										11	#4	5-08	L	#4 @48" STANDEE	42
499									2	40	#5	6-10	H	#5 @12" D/V EF	570
500									2	6	#5	40-00		#5 @12" HOR EF	501
501										30	#5	4-00		#5 @32" CMU DWL	125
502															
503				>SOG							SLAB ON GRADE				
504														REFER = 1/S2.3 (2140 LFT)	
505									61	2	#4	40-00		2-#4 CONT	3260
506									67	3	#6	40-00		3-#6 TOP	12076
507															
508														REFER = 3/S2.3 (570 LFT)	
509									20	2	#4	40-00		2-#4 CONT	1069
510															
511														REFER = S1.21 (NOTE = 3)	
512														4" THICK SOG	
513														AREA = 31320 SQ.FT.	
514										1117	#3	40-00		#3 @18" EW	16800
515															
516														REFER = 5/S2.4 (75 LOC.)	
517									75	2	#5	6-00		2-#5 RE-ENTRANT	939
518															
519														REFER = S1.21 (3 LOC)	
520					3				2	2	#4	2-00		2-#4 EW	16
521															
522				>CMU WALL							CMU WALL				
523														ELEVATOR CMU	
524														REFER = 5/S2.3 (37 LFT) (VARIES)	
525										30	#5	76-06		#5 @32" VERT	2394
526					5				2	2	#5	20-00		2-#5 BB	417
527									4	1	#5	7-04		1-#5 LINTEL	31

Bid Date -

** ESTIMATING BAR LIST **

LINE	LA	EP	A/D	STRUCTURE	MULT	REQ	CODE	+	X	QTY	SZ/GR	LENGTH	B	COMMENT	LINE LB
528															
529				BUILDING - 3			BUILDING - 3								
530				>SPREAD FTG.			SPREAD FOOTING								
531				REF.SHEET.-(S1.31)											
532				MARK = F5.0 (2-LOC.)											
533						2			2	6	#5	5-00		6-#5 EW BOT	125
534				MARK = F6.0 (11-LOC.)											
535						11			2	9	#5	6-00		9-#5 EW BOT	1239
536				MARK = F7.0 (14-LOC.)											
537						14			2	8	#6	7-00		8-#6 EW BOT	2355
538				MARK = F8.0 (11-LOC.)											
539						11			2	9	#6	8-00		9-#6 EW BOT	2379
540				MARK = F9.0 (13-LOC.)											
541						13			2	9	#7	9-00		9-#7 EW BOT	4305
542				MARK = F10.0 (14-LOC.)											
543						14			2	10	#7	10-00		10-#7 EW BOT	5723
544				MARK = F11.0 (2-LOC.)											
545						2			2	13	#7	11-00		13-#7 EW BOT	1169
546															
547				>CONC.COLUMN			CONCRETE COLUMN								
548				REF.SHEET.-(2/S1.31)											
549				MARK = C1 (68-LOC.)											
550									68	4	#9	7-07	H	4-#9 DWL	7013
551									68	4	#9	14-00	H	4-#9 VERT	12947
552									68	4	#9	7-07	H	4-#9 DWL TOP	7013
553									68	15	#3	6-04	L	#3 @12" TIES	2429
554									68	6	#3	6-04	L	6-#3 TOP TIES	972
555				MARK = C2 (3-LOC.)											
556									3	6	#9	7-07	H	6-#9 DWL	464
557									3	6	#9	14-00	H	6-#9 VERT	857
558									3	6	#9	7-07	H	6-#9 DWL TOP	464

Bid Date -

** ESTIMATING BAR LIST **

LINE	LA	EP	A/D	STRUCTURE	MULT	REQ	CODE	+	X	QTY	SZ/GR	LENGTH	B	COMMENT	LINE LB
559									3	15	#3	6-04	L	#3 @12" TIES	107
560									3	6	#3	6-04	L	6-#3 TOP TIES	43
561									3	15	#3	2-08	L	#3 @12" LINKS	45
562									3	6	#3	2-08	L	6-#3 TOP LINKS	18
563															
564	>WALL FOOTING			WALL FOOTING											
565	REF.(S1.31 & 1/S2.2)														
566	MARK=WF2.0 (1018 LFT)														
567									30	2	#4	40-00		2-#4 CONT	1603
568									22	2	#4	4-10	L	2-#4 COR	142
569										681	#4	4-10	L	#4 @18" D/V	2199
570	MARK=WF2.5 (76 LFT)														
571									2	2	#5	40-00		2-#5 CONT	167
572										55	#5	2-06		#5 @18" TRANS	143
573															
574	CONCRETE DWL														
575	REF.(5/S2.6) (75 LFT)														
576									2	26	#5	5-00	H	#5 @18" DWL EF	271
577	REF.(4/S2.3) (92 LFT)														
578									2	67	#5	5-00	H	#5 @18" DWL EF	699
579	REF.(4/S2.3) (70 LFT)														
580									2	65	#5	5-00	H	#5 @14" DWL EF	678
581	REF.(7/S2.2) (50 LFT)														
582									2	52	#5	3-10	H	#5 @12" DWL EF	416
583															
584	>MAT FOOTING			MAT FOOTING											
585	STAIR CASE														
586	REF.(S1.31 & 4/S2.3)														
587	12" THICK MAT (760 SQ.FT)														
588									2	45	#5	40-00		#5 @12" EW T&B	3755
589										52	#4	5-08	L	#4 @48" STANDEE	197

Bid Date -

** ESTIMATING BAR LIST **

LINE	LA	EP	A/D	STRUCTURE	MULT	REQ	CODE	+	X	QTY	SZ/GR	LENGTH	B	COMMENT	LINE LB
590															
591				>ELEVATOR PIT			ELEVATOR PIT								
592				REF.(S1.31 & 5/S2.3) (MARK=SW2)											
593				18" THICK MAT (170 SQ.FT) (38 LFT)											
594										15	#5	40-00		#5 @12" EW TOP	626
595										15	#8	40-00		#8 @12" EW BOT	1602
596										15	#4	6-08	L	#4 @48" STANDEE	67
597									2	31	#5	7-04	H	#5 @18" D/V EF	474
598									2	5	#4	40-00		#4 @14" HOR EF	267
599						4			2	5	#4	4-10	L	#4 @14" COR EF	129
600									2	24	#5	4-00		#5 @18 DWL EF	200
601									2	3	#4	6-00	L	3-#4 EW BOT SUMP PIT	24
602				REF.(S1.31 & 5/S2.3) (MARK=SW3)											
603				18" THICK MAT (215 SQ.FT) (38 LFT)											
604										16	#5	40-00		#5 @12" EW TOP	668
605										20	#9	40-00		#9 @12" EW BOT	2720
606										18	#4	6-08	L	#4 @48" STANDEE	80
607									2	62	#5	7-04	H	#5 @8" D/V EF	948
608									2	8	#5	40-00		#5 @8" HOR EF	668
609						4			2	8	#5	5-00	H	#5 @8" COR EF	334
610									2	47	#5	4-00		#5 @8 DWL EF	392
611									2	3	#4	6-00	L	3-#4 EW BOT SUMP PIT	24
612															
613				>CONC. WALL			CONCRETE WALL								
614				REF.(S1.31 & 1/S2.2) (1015 LFT)											
615									28	2	#4	40-00		2-#4 CONT	1496
616									22	2	#4	4-10	L	2-#4 COR	142
617										732	#4	4-00		#4 @24" CMU DWL	1956
618				REF.(7/S2.2) (50 LFT)											
619									2	52	#5	3-00		#5 @12" VERT EF	325
620						2			2	4	#4	40-00		#4 @12" HOR EF	428

Bid Date -

** ESTIMATING BAR LIST **

LINE	LA	EP	A/D	STRUCTURE	MULT	REQ	CODE	+	X	QTY	SZ/GR	LENGTH	B	COMMENT	LINE LB
621										26	#4	4-06	L	#4 @24" DWL	78
622															
623 CONCRETE SHEAR WALL															
624 REF.(4/S2.3)															
625 MARK=SW2 (92 LFT) (H-14'-0")															
626									2	67	#5	14-00		#5 @18" VERT EF	1957
627						3			2	13	#4	40-00		#4 @14" HOR EF	2084
628						6			2	13	#4	4-10	L	#4 @14" COR EF	504
629						20			13	3	#4	2-02	L	#4 @18" LINKS	1129
630 MARK=SW4 (71 LFT) (H-14'-0")															
631									2	66	#5	14-00		#5 @14" VERT EF	1927
632						2			2	13	#5	40-00		#5 @14" HOR EF	2169
633						4			2	13	#5	5-00	H	#5 @14" COR EF	542
634						8			13	3	#4	2-02	L	#4 @14" LINKS	452
635 REF.(5/S2.3) (ELEVATOR WALL)															
636 MARK=SW2 (38 LFT) (H-12'-0")															
637									2	26	#5	12-00		#5 @18" VERT EF	651
638									2	12	#4	40-00		#4 @14" HOR EF	641
639						4			2	12	#4	4-10	L	#4 @14" COR EF	310
640						8			13	3	#4	2-02	L	#4 @18" LINKS	452
641 REF.(5/S2.3) (ELEVATOR WALL)															
642 MARK=SW3 (41 LFT) (H-12'-0")															
643									2	64	#5	12-00		#5 @8" VERT EF	1602
644									2	20	#5	40-00		#5 @8" HOR EF	1669
645									2	20	#5	10-00		#5 @8" HOR EF	417
646						4			2	20	#5	4-10	L	#5 @8" COR EF	807
647						8			20	3	#4	2-02	L	#4 @8" LINKS	695
648															
649 >SOG SLAB ON GRADE															
650 REF.(S1.31) (33120 SQ.FT)															
651 4" THICK SLAB ON GRADE															

Bid Date -

** ESTIMATING BAR LIST **

LINE	LA	EP	A/D	STRUCTURE	MULT	REQ	CODE	+	X	QTY	SZ/GR	LENGTH	B	COMMENT	LINE LB
652										1178	#3	40-00		#3 @18" EW	17717
653															
654 REF.(7/S2.2) (50 LFT)															
655										52	#4	8-00	L	#4 @12" ADDL	278
656 CMU DWL															
657										20	#5	2-04	H	#5 @32" CMU DWL	49
658										12	#4	2-04	L	#4 ADD'L DWL	19
659 REF.SHEET.-(4/S2.6) (60 LFT)															
660									2	2	#4	40-00		2-#4 CONT SKIN	107
661										65	#4	7-10	L	#4 @12" STIRR	340
662															
663				>CMU WALL										CMU WALL	
664 ELEVATOR CMU WALL (2-LOC.)															
665 REF.(S1.31 & 5/S2.3) (38 LFT) (H=VARIES)															
666					2					12	#5	91-03		#5 @32" VERT	2284
667					2					6	#5	75-07		#5 @32" VERT	946
668					2					12	#4	70-01		#4 ADD'L VERT	1124
669					2					2	#5	91-03		2-#5 JAMB VERT	381
670					2	2			6	2	#5	20-00		2-#5 BB	1001
671					2	4			6	2	#5	5-00	H	2-#5 BB COR	501
672									5	1	#5	7-04	L	1-#5 BOT	38
673															
674 EXTERIOR CMU WALL															
675 REF.(S1.31 & 1/S2.2) (1014 LFT) (H=12'-0")															
676										512	#4	16-00		#4 @24" VERT	5472
677										160	#4	16-00		#4 ADD'L VERT	1710
678									58	2	#5	20-00		2-#5 BB	2420
679									30	2	#5	5-00	H	2-#5 BB COR	313
680 INTERIOR CMU WALL															
681 REF.(S1.31 & 1/S2.2) (80 LFT) (H=12'-0")															
682										40	#4	16-00		#4 @24" VERT	428

Bid Date -

** ESTIMATING BAR LIST **

LINE	LA	EP	A/D	STRUCTURE	MULT	REQ	CODE	+	X	QTY	SZ/GR	LENGTH	B	COMMENT	LINE LB
683										20	#4	16-00		#4 ADD'L VERT	214
684									6	2	#5	20-00		2-#5 BB	250
685									4	2	#5	5-00	H	2-#5 BB COR	42
686															
687				>UPPER LEVEL										UPPER LEVEL	
688				REF.SHEET.-(S1.32)											
689										12	#6	24-00		12-#6 BOT	433
690										16	#6	27-00		16-#6 BOT	649
691									4	2	#5	30-00	H	2-#5 @12" TOP	250
692									5	2	#5	30-06	H	2-#5 @12" TOP	318
693										2	#5	27-00	H	2-#5 @12" TOP	56
694										3	#5	13-00	H	3-#5 @12" TOP	41
695										3	#5	30-00	H	3-#5 @12" TOP	94
696									7	3	#5	31-00	H	3-#5 @12" TOP	679
697										3	#5	28-00	H	3-#5 @12" TOP	88
698										3	#5	29-00	H	3-#5 @12" TOP	91
699									8	3	#5	33-06	H	3-#5 @12" TOP	839
700										4	#5	29-00	H	4-#5 @12" TOP	121
701										4	#5	38-00	H	4-#5 @12" TOP	159
702										7	#5	8-06		7-#5 @8" TOP	62
703										7	#5	18-06		7-#5 @9" TOP	135
704										7	#5	11-06		7-#5 @9" TOP	84
705										9	#5	12-06	H	9-#5 @9" TOP	117
706										9	#5	18-00		9-#5 @9" TOP	169
707										7	#5	19-00		7-#5 @9" TOP	139
708										7	#5	15-00		7-#5 @12" TOP	110
709										8	#5	28-00	H	8-#5 @12" TOP	234
710										8	#5	30-06	H	8-#5 @12" TOP	254
711										8	#5	10-00	H	8-#5 @12" TOP	83
712									12	8	#5	30-00	H	8-#5 @12" TOP	3004
713										8	#5	31-00	H	8-#5 @12" TOP	259

Bid Date -

** ESTIMATING BAR LIST **

LINE	LA	EP	A/D	STRUCTURE	MULT	REQ	CODE	+	X	QTY	SZ/GR	LENGTH	B	COMMENT	LINE LB
714									6	9	#5	35-00	H	9-#5 @12" TOP	1971
715										9	#5	32-00	H	9-#5 @12" TOP	300
716									14	9	#5	35-06	H	9-#5 @12" TOP	4665
717										9	#5	29-06	H	9-#5 @10" TOP	277
718										6	#5	17-00		6-#5 @8" TOP	106
719									8	6	#5	19-00		6-#5 @12" TOP	951
720										6	#5	22-00		6-#5 @12" TOP	138
721										6	#5	29-00	H	6-#5 @12" TOP	181
722										6	#5	30-00	H	6-#5 @12" TOP	188
723										6	#5	35-00	H	6-#5 @12" TOP	219
724										6	#5	31-06	H	6-#5 @8" TOP	197
725										4	#5	29-00	H	4-#5 @12" TOP	121
726										5	#5	35-00	H	5-#5 @12" TOP	183
727									4	10	#5	19-00	H	10-#5 @9" TOP	793
728										10	#5	28-00	H	10-#5 @12" TOP	292
729										10	#5	30-00	H	10-#5 @12" TOP	313
730										10	#5	31-06	H	10-#5 @12" TOP	329
731										11	#5	19-00		11-#5 @10" TOP	218
732										11	#5	28-00	H	11-#5 @12" TOP	321
733										11	#5	28-06	H	11-#5 @12" TOP	327
734									2	11	#5	31-06	H	11-#5 @8" TOP	723
735									2	11	#5	33-00	H	11-#5 @12" TOP	757
736										12	#5	28-00	H	12-#5 @12" TOP	350
737										13	#5	9-00	H	12-#5 @6" TOP	122
738										14	#5	32-00	H	14-#5 @8" TOP	467
739										16	#5	30-06	H	16-#5 @12" TOP	509
740									2	2	#7	32-06	H	2-#7 @10" TOP	266
741										2	#7	33-00	H	2-#7 @12" TOP	135
742										2	#7	12-00	H	2-#7 @8" TOP	49
743										2	#7	34-00	H	2-#7 @12" TOP	139
744									3	2	#7	35-06	H	2-#7 @12" TOP	435

Bid Date -

** ESTIMATING BAR LIST **

LINE	LA	EP	A/D	STRUCTURE	MULT	REQ	CODE	+	X	QTY	SZ/GR	LENGTH	B	COMMENT	LINE LB
745										3	#7	14-00	H	3-#7 @12" TOP	86
746										3	#7	33-00	H	3-#7 @8" TOP	202
747										10	#7	32-06	H	10-#7 @10" TOP	664
748										10	#7	35-00	H	10-#7 @10" TOP	715
749										6	#7	28-00	H	6-#7 @12" TOP	343
750										6	#7	33-00	H	6-#7 @8" TOP	405
751									2	6	#7	30-06	H	6-#7 @10" TOP	748
752									2	5	#7	31-06	H	5-#7 @10" TOP	644
753										5	#7	11-00		5-#7 @7" TOP	112
754									2	5	#7	21-00	H	5-#7 @9" TOP	429
755										5	#7	20-06		5-#7 @9" TOP	210
756										5	#7	30-06	H	5-#7 @10" TOP	312
757										5	#7	31-00	H	5-#7 @8" TOP	317
758										5	#7	31-00	H	5-#7 @9" TOP	317
759									4	5	#7	32-06	H	5-#7 @10" TOP	1329
760										5	#7	33-06	H	5-#7 @10" TOP	342
761									2	5	#7	37-06	H	5-#7 @10" TOP	767
762									2	5	#7	39-06	H	5-#7 @10" TOP	807
763									2	4	#7	37-06	H	4-#7 @10" TOP	613
764										4	#7	21-00		4-#7 @9" TOP	172
765										4	#7	30-06	H	4-#7 @12" TOP	249
766										4	#7	37-06	H	4-#7 @10" TOP	307
767										4	#7	32-06	H	4-#7 @10" TOP	266
768										4	#7	33-00	H	4-#7 @10" TOP	270
769										7	#7	30-06	H	7-#7 @10" TOP	436
770									6	7	#7	32-00	H	7-#7 @8" TOP	2747
771									4	7	#7	32-06	H	7-#7 @10" TOP	1860
772									5	7	#7	33-06	H	7-#7 @10" TOP	2397
773									6	12	#7	18-00		12-#7 @6" TOP	2649
774									5	12	#7	21-00	H	12-#7 @8" TOP	2575
775										12	#7	33-00	H	12-#7 @8" TOP	809

Bid Date -

** ESTIMATING BAR LIST **

LINE	LA	EP	A/D	STRUCTURE	MULT	REQ	CODE	+	X	QTY	SZ/GR	LENGTH	B	COMMENT	LINE LB	
776									4	12	#7	30-06	H	12-#7 @8" TOP	2992	
777										12	#7	40-06	H	12-#7 @10" TOP	993	
778										13	#7	19-00	H	13-#7 @6" TOP	505	
779									2	11	#7	19-00		11-#7 @7" TOP	854	
780										11	#7	33-00	H	11-#7 @8" TOP	742	
781										11	#7	31-06	H	11-#7 @10" TOP	708	
782										11	#7	38-00	H	11-#7 @8" TOP	854	
783										15	#7	38-00	H	15-#7 @8" TOP	1165	
784										8	#7	33-00	H	8-#7 @8" TOP	540	
785									2	8	#7	31-00	H	8-#7 @9" TOP	1014	
786									2	8	#7	21-00	H	8-#7 @9" TOP	687	
787									8	8	#7	19-00		8-#7 @8" TOP	2486	
788									4	8	#7	31-06	H	8-#7 @10" TOP	2060	
789										8	#7	37-06	H	8-#7 @10" TOP	613	
790										7	8	#7	36-00	H	8-#7 @10" TOP	4121
791										5	8	#7	40-06	H	8-#7 @10" TOP	3311
792										8	8	#7	42-06	H	8-#7 @12" TOP	5560
793										9	#7	29-06	H	9-#7 @10" TOP	543	
794										9	#7	20-06		9-#7 @10" TOP	377	
795										10	#7	21-00		10-#7 @8" TOP	429	
796									4	9	#7	21-00		9-#7 @8" TOP	1545	
797										7	#7	21-00		7-#7 @8" TOP	300	
798										9	#7	21-00		9-#7 @9" TOP	386	
799									3	6	#7	21-00		6-#7 @8" TOP	773	
800										8	#7	19-00		8-#7 @12" TOP	311	
801										9	#7	30-06	H	9-#7 @10" TOP	561	
802									4	9	#7	33-00	H	9-#7 @8" TOP	2428	
803									4	15	#7	19-00		15-#7 @6" TOP	2330	
804									2	10	#7	39-00		10-#7 @8" TOP	1594	
805									10	12	#7	39-00		12-#7 @10" TOP	9566	
806										9	#5	35-06	H	9-#5 @12" TOP	333	

Bid Date -

** ESTIMATING BAR LIST **

LINE	LA	EP	A/D	STRUCTURE	MULT	REQ	CODE	+	X	QTY	SZ/GR	LENGTH	B	COMMENT	LINE LB
807										17	#5	6-00	H	17-#5 @12" TOP	106
808										6	#5	57-00		6-#5 @12" TOP	357
809										13	#5	19-00		13-#5 @8" TOP	258
810									5	13	#5	19-00		13-#5 @12" TOP	1288
811										13	#5	35-00		13-#5 @12" TOP	475
812										19	#5	10-00	H	19-#5 @12" TOP	198
813										20	#5	29-00	H	20-#5 @8" TOP	605
814										22	#5	6-06	H	22-#5 @12" TOP	149
815										2	#7	8-00	H	2-#7 @8" TOP	33
816										2	#7	32-00	H	2-#7 @10" TOP	131
817										3	#7	14-06	H	3-#7 @8" TOP	89
818										3	#7	20-00	H	3-#7 @6" TOP	123
819										3	#7	37-00	H	3-#7 @10" TOP	227
820										13	#7	30-06	H	13-#7 @9" TOP	810
821										13	#7	32-00	H	13-#7 @6" TOP	850
822									2	11	#7	21-00		11-#7 @8" TOP	944
823										11	#7	29-00	H	11-#7 @9" TOP	652
824										11	#7	32-00	H	11-#7 @10" TOP	719
825										12	#7	19-00		12-#7 @7" TOP	466
826										12	#7	8-06		12-#7 @8" TOP	208
827									4	12	#7	30-06	H	12-#7 @8" TOP	2992
828										12	#7	40-06	H	12-#7 @10" TOP	993
829										13	#7	19-00	H	13-#7 @6" TOP	505
830									2	11	#7	19-00		11-#7 @7" TOP	854
831										11	#7	33-00	H	11-#7 @8" TOP	742
832										11	#7	31-06	H	11-#7 @10" TOP	708
833										11	#7	38-00	H	11-#7 @8" TOP	854
834										15	#7	38-00	H	15-#7 @8" TOP	1165
835										8	#7	33-00	H	8-#7 @8" TOP	540
836									2	8	#7	31-00	H	8-#7 @9" TOP	1014
837									2	8	#7	21-00	H	8-#7 @9" TOP	687

Bid Date -

** ESTIMATING BAR LIST **

LINE	LA	EP	A/D	STRUCTURE	MULT	REQ	CODE	+	X	QTY	SZ/GR	LENGTH	B	COMMENT	LINE LB
838									8	8	#7	19-00		8-#7 @8" TOP	2486
839									4	8	#7	31-06	H	8-#7 @10" TOP	2060
840										8	#7	37-06	H	8-#7 @10" TOP	613
841									7	8	#7	36-00	H	8-#7 @10" TOP	4121
842									5	8	#7	40-06	H	8-#7 @10" TOP	3311
843									8	8	#7	42-06	H	8-#7 @12" TOP	5560
844										9	#7	29-06	H	9-#7 @10" TOP	543
845										9	#7	20-06		9-#7 @10" TOP	377
846										10	#7	21-00		10-#7 @8" TOP	429
847									4	9	#7	21-00		9-#7 @8" TOP	1545
848									5	#5		35-00	H	5-#5 @12" TOP	183
849									4	10	#5	19-00	H	10-#5 @9" TOP	793
850										10	#5	28-00	H	10-#5 @12" TOP	292
851										10	#5	30-00	H	10-#5 @12" TOP	313
852										10	#5	31-06	H	10-#5 @12" TOP	329
853										11	#5	19-00		11-#5 @10" TOP	218
854										11	#5	28-00	H	11-#5 @12" TOP	321
855										11	#5	28-06	H	11-#5 @12" TOP	327
856									2	11	#5	31-06	H	11-#5 @8" TOP	723
857									2	11	#5	33-00	H	11-#5 @12" TOP	757
858										12	#5	28-00	H	12-#5 @12" TOP	350
859										13	#5	9-00	H	12-#5 @6" TOP	122
860										14	#5	32-00	H	14-#5 @8" TOP	467
861										16	#5	30-06	H	16-#5 @12" TOP	509
862									2	2	#7	32-06	H	2-#7 @10" TOP	266
863										2	#7	33-00	H	2-#7 @12" TOP	135
864										2	#7	12-00	H	2-#7 @8" TOP	49
865										2	#7	34-00	H	2-#7 @12" TOP	139
866									3	2	#7	35-06	H	2-#7 @12" TOP	435
867										3	#7	14-00	H	3-#7 @12" TOP	86
868										3	#7	33-00	H	3-#7 @8" TOP	202

Bid Date -

** ESTIMATING BAR LIST **

LINE	LA	EP	A/D	STRUCTURE	MULT	REQ	CODE	+	X	QTY	SZ/GR	LENGTH	B	COMMENT	LINE LB
900	REF.SHEET.-(S1.12)														
901	11" THICK CONCRETE SLAB														
902	AREA = 33920 SQ.FT														
903										1910	#6	40-00		#6 @12" EW	114753
904															
905	REF.(2/S2.5)(5 LOC)														
906									5	14	#5	6-10		#5 @12" ADDL TOP	499
907									5	12	#5	18-00		#5 @9" ADDL TOP	1126
908															
909				GARAGE-A										GARAGE-A FOUNDATION	
910				>CONT. FTG										CONTINUOUS FOOTING	
911	REFER = 1/S8.3 (200 LFT)														
912									6	2	#4	40-00		2-#4 CONT	321
913										105	#4	5-08	L	#4 @24" D/V	397
914									6	3	#4	40-00		#4 @24" HOR	481
915															
916	REFER = 4/S8.3 (95 LFT)														
917									3	2	#4	40-00		2-#4 CONT	160
918										50	#4	3-04	L	#4 @18" D/V	111
919									2	1	#4	40-00		1-#4 HOR T&B	53
920															
921				>SOG										SLAB ON GRADE	
922	REFER = 2/S8.3 (75 LFT)														
923									2	2	#4	40-00		2-#4 CONT BOT	107
924									2	1	#4	40-00		1-#4 CONT TOP	53
925										45	#3	5-08	L	#3 @24" DWL	96
926	REFER = 2/S8.3 (85 LFT)														
927									3	1	#4	40-00		1-#4 CONT TOP	80
928															
929	REFER = S8.1														
930	4" THICK SLAB														

Bid Date -

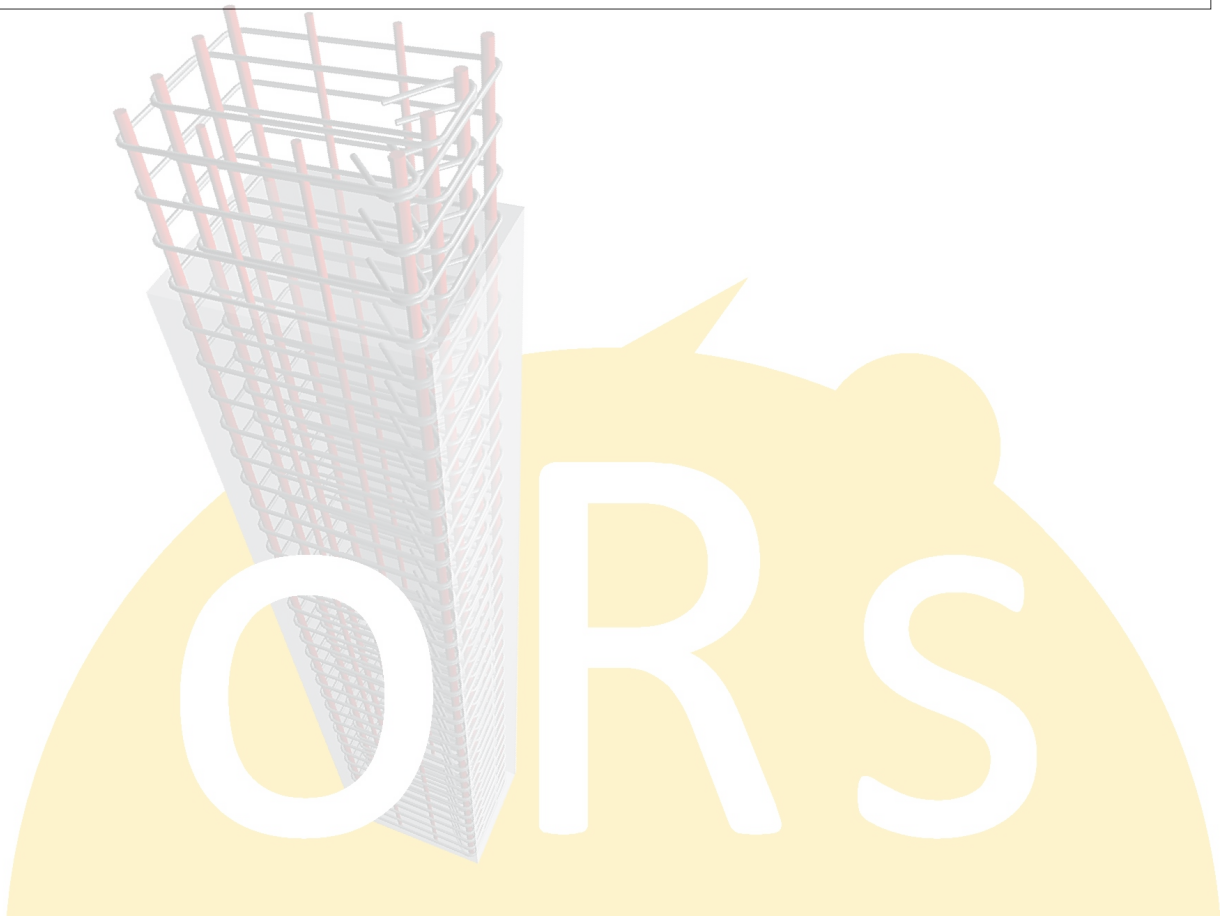
** ESTIMATING BAR LIST **

LINE	LA	EP	A/D	STRUCTURE	MULT	REQ	CODE	+	X	QTY	SZ/GR	LENGTH	B	COMMENT	LINE LB
931	AREA = 2160 SQ.FT														
932										85	#3	40-00		#3 @18" EW	1278
933															
934	GARAGE-B				GARAGE-B FOUNDATION										
935	>CONT. FTG				CONTINUOUS FOOTING										
936	REFER = 1/S8.3 (200 LFT)														
937									6	2	#4	40-00		2-#4 CONT	321
938										105	#4	5-08	L	#4 @24" D/V	397
939									6	3	#4	40-00		#4 @24" HOR	481
940															
941	REFER = 4/S8.3 (95 LFT)														
942									3	2	#4	40-00		2-#4 CONT	160
943										50	#4	3-04	L	#4 @18" D/V	111
944									2	1	#4	40-00		1-#4 HOR T&B	53
945															
946	>SOG				SLAB ON GRADE										
947	REFER = 2/S8.3 (75 LFT)														
948									2	2	#4	40-00		2-#4 CONT BOT	107
949									2	1	#4	40-00		1-#4 CONT TOP	53
950										45	#3	5-08	L	#3 @24" DWL	96
951	REFER = 2/S8.3 (85 LFT)														
952									3	1	#4	40-00		1-#4 CONT TOP	80
953															
954	REFER = S8.1														
955	4" THICK SLAB														
956	AREA = 2160 SQ.FT														
957										85	#3	40-00		#3 @18" EW	1278
958															
959	POOLHOUSE				POOLHOUSE FOUNDATION										
960	>CONT. FTG				CONTINUOUS FOOTING										
961	REFER = 1/S8.3 (60 LFT)														

Bid Date -

**** ESTIMATING BAR LIST ****

LINE	LA	EP	A/D	STRUCTURE	MULT	REQ	CODE	+	X	QTY	SZ/GR	LENGTH	B	COMMENT	LINE LB
993	CONCRETE STAIR														
994	REF.SHEET.-(C12.2)(550 SQ.FT)														
995										20	#4	40-00		#4 @12" LW	534
996										25	#4	40-00		#4 @10" SW	668
997															
998															



Bid Date -

**** TOTALS PAGE (LBS) ****

BUILDING - 1		STRUCTURE TOTAL		STRAIGHT		LIGHT BENT		HEAVY BENT		STOCK/MILL	
SIZE	%	Weight	%	Weight	%	Weight	%	Weight	%	Weight	
#3 Gr 60	100	21,564			14	3,065			86	18,499	
#4 Gr 60	100	41,698	17	7,227	27	11,277			56	23,194	
#5 Gr 60	100	73,349	62	45,380	1	537	34	24,762	4	2,670	
#6 Gr 60	100	98,940	99	98,068			1	872			
#7 Gr 60	100	51,627	56	29,111			44	22,516			
#8 Gr 60	100	2,670	100	2,670							
#9 Gr 60	100	16,184					100	16,184			
		Average Lbs per Linear Feet = 1.0664				Average Rebar Size = 5.62					
Total 153.1 Tons	100	306,032	60	182,456	5	14,879	21	64,334	14	44,363	

BUILDING - 1		>SPREAD FTG.		SubStructure		STRAIGHT		LIGHT BENT		HEAVY BENT		STOCK/MILL	
SIZE	%	Weight	%	Weight	%	Weight	%	Weight	%	Weight	%	Weight	
#5 Gr 60	100	1,077	100	1,077									
#6 Gr 60	100	1,898	100	1,898									
#7 Gr 60	100	6,836	100	6,836									
		Average Lbs per Linear Feet = 1.7393				Average Rebar Size = 6.59							
Total 5.0 Tons	100	9,811	100	9,811									

BUILDING - 1		>CONC.COLUMN		SubStructure		STRAIGHT		LIGHT BENT		HEAVY BENT		STOCK/MILL	
SIZE	%	Weight	%	Weight	%	Weight	%	Weight	%	Weight	%	Weight	
#3 Gr 60	100	2,001			100	2,001							
#9 Gr 60	100	16,184							100	16,184			
		Average Lbs per Linear Feet = 1.8037				Average Rebar Size = 8.34							
Total 9.1 Tons	100	18,185			11	2,001	89	16,184					

Bid Date -

**** TOTALS PAGE (LBS) ****

BUILDING - 1
 >WALL FOOTING ---- SubStructure ---- ----- STRAIGHT ----- LIGHT BENT ----- HEAVY BENT ----- STOCK/MILL -----

SIZE	%	Weight	%	Weight	%	Weight	%	Weight	%	Weight
#3 Gr 60	100	406			100	406				
#4 Gr 60	100	7,471			37	2,740			63	4,731
#5 Gr 60	100	13,136	40	5,234			60	7,902		
#6 Gr 60	100	4,297	80	3,425			20	872		
Average Lbs per Linear Feet = .9131					Average Rebar Size = 4.84					
Total 12.7 Tons	100	25,310	34	8,659	12	3,146	35	8,774	19	4,731

BUILDING - 1
 >MAT FOOTING ---- SubStructure ---- ----- STRAIGHT ----- LIGHT BENT ----- HEAVY BENT ----- STOCK/MILL -----

SIZE	%	Weight	%	Weight	%	Weight	%	Weight	%	Weight
#4 Gr 60	100	132			100	132				
#5 Gr 60	100	1,971	66	1,293			34	678		
#6 Gr 60	100	1,923	100	1,923						
Average Lbs per Linear Feet = 1.1955					Average Rebar Size = 5.44					
Total 2.1 Tons	100	4,026	80	3,216	3	132	17	678		

BUILDING - 1
 >ELEVATOR PIT ---- SubStructure ---- ----- STRAIGHT ----- LIGHT BENT ----- HEAVY BENT ----- STOCK/MILL -----

SIZE	%	Weight	%	Weight	%	Weight	%	Weight	%	Weight
#4 Gr 60	100	140			100	140				
#5 Gr 60	100	1,387	75	1,043			25	344		
#8 Gr 60	100	2,670	100	2,670						
Average Lbs per Linear Feet = 1.6528					Average Rebar Size = 6.88					
Total 2.1 Tons	100	4,197	88	3,713	3	140	8	344		

Bid Date -

**** TOTALS PAGE (LBS) ****

**BUILDING - 1
 >CONC. WALL**

		---- SubStructure ----		----- STRAIGHT -----		----- LIGHT BENT -----		----- HEAVY BENT -----		----- STOCK/MILL -----	
SIZE	%	Weight	%	Weight	%	Weight	%	Weight	%	Weight	
#4 Gr 60	100	25,507	4	1,122	31	7,899			65	16,486	
#5 Gr 60	100	15,614	98	15,376			2	238			
#6 Gr 60	100	4,427	100	4,427							
Average Lbs per Linear Feet = .8119						Average Rebar Size = 4.54					
Total 22.8 Tons	100	45,548	46	20,925	17	7,899	1	238	36	16,486	

**BUILDING - 1
 >SOG**

		---- SubStructure ----		----- STRAIGHT -----		----- LIGHT BENT -----		----- HEAVY BENT -----		----- STOCK/MILL -----	
SIZE	%	Weight	%	Weight	%	Weight	%	Weight	%	Weight	
#3 Gr 60	100	19,157			3	658			97	18,499	
#4 Gr 60	100	2,388	21	492	1	26			78	1,870	
#5 Gr 60	100	5,841	100	5,841							
#6 Gr 60	100	8,411	100	8,411							
Average Lbs per Linear Feet = .5447						Average Rebar Size = 4.10					
Total 17.9 Tons	100	35,797	41	14,744	2	684			57	20,369	

**BUILDING - 1
 >CMU WALL**

		---- SubStructure ----		----- STRAIGHT -----		----- LIGHT BENT -----		----- HEAVY BENT -----		----- STOCK/MILL -----	
SIZE	%	Weight	%	Weight	%	Weight	%	Weight	%	Weight	
#4 Gr 60	100	5,613	100	5,613							
#5 Gr 60	100	7,308	52	3,807	1	38	11	793	37	2,670	
Average Lbs per Linear Feet = .8385						Average Rebar Size = 4.57					
Total 6.5 Tons	100	12,921	73	9,420		38	6	793	21	2,670	

Bid Date -

**** TOTALS PAGE (LBS) ****

BUILDING - 1
>UPPER LEVEL ---- SubStructure ---- ----- STRAIGHT ----- LIGHT BENT ----- HEAVY BENT ----- STOCK/MILL -----

SIZE	%	Weight	%	Weight	%	Weight	%	Weight	%	Weight
#4 Gr 60	100	447			76	340			24	107
#5 Gr 60	100	27,015	43	11,709	2	499	55	14,807		
#6 Gr 60	100	77,984	100	77,984						
#7 Gr 60	100	44,791	50	22,275			50	22,516		
Average Lbs per Linear Feet = 1.4963					Average Rebar Size = 6.11					
Total 75.2 Tons	100	150,237	75	111,968	1	839	25	37,323		107

BUILDING-2
STRUCTURE TOTAL ----- STRAIGHT ----- LIGHT BENT ----- HEAVY BENT ----- STOCK/MILL -----

SIZE	%	Weight	%	Weight	%	Weight	%	Weight	%	Weight
#3 Gr 60	100	16,879				79			100	16,800
#4 Gr 60	100	12,502	2	272	24	3,012			74	9,218
#5 Gr 60	100	6,421	85	5,434			9	570	6	417
#6 Gr 60	100	12,412	100	12,412						
Average Lbs per Linear Feet = .6179					Average Rebar Size = 4.30					
Total 24.2 Tons	100	48,214	38	18,118	6	3,091	1	570	55	26,435

BUILDING-2
>SPREAD FTG. ---- SubStructure ---- ----- STRAIGHT ----- LIGHT BENT ----- HEAVY BENT ----- STOCK/MILL -----

SIZE	%	Weight	%	Weight	%	Weight	%	Weight	%	Weight
#4 Gr 60	100	256	100	256						
#5 Gr 60	100	526	100	526						
#6 Gr 60	100	336	100	336						
Average Lbs per Linear Feet = 1.0061					Average Rebar Size = 5.07					
Total .6 Tons	100	1,118	100	1,118						

Bid Date -

**** TOTALS PAGE (LBS) ****

**BUILDING-2
 >CONT. FTG**

	---- SubStructure ----		----- STRAIGHT -----		----- LIGHT BENT -----		----- HEAVY BENT -----		----- STOCK/MILL -----	
SIZE	%	Weight	%	Weight	%	Weight	%	Weight	%	Weight
#3 Gr 60	100	79			100	79				
#4 Gr 60	100	7,901			38	3,012			62	4,889
#5 Gr 60	100	2,114	73	1,544			27	570		
Average Lbs per Linear Feet = .7177					Average Rebar Size = 4.20					
Total 5.1 Tons	100	10,094	15	1,544	31	3,091	6	570	48	4,889

**BUILDING-2
 >SOG**

	---- SubStructure ----		----- STRAIGHT -----		----- LIGHT BENT -----		----- HEAVY BENT -----		----- STOCK/MILL -----	
SIZE	%	Weight	%	Weight	%	Weight	%	Weight	%	Weight
#3 Gr 60	100	16,800							100	16,800
#4 Gr 60	100	4,345		16					100	4,329
#5 Gr 60	100	939	100	939						
#6 Gr 60	100	12,076	100	12,076						
Average Lbs per Linear Feet = .5681					Average Rebar Size = 4.24					
Total 17.1 Tons	100	34,160	38	13,031					62	21,129

**BUILDING-2
 >CMU WALL**

	---- SubStructure ----		----- STRAIGHT -----		----- LIGHT BENT -----		----- HEAVY BENT -----		----- STOCK/MILL -----	
SIZE	%	Weight	%	Weight	%	Weight	%	Weight	%	Weight
#5 Gr 60	100	2,842	85	2,425					15	417
Average Lbs per Linear Feet = 1.0430					Average Rebar Size = 5.00					
Total 1.5 Tons	100	2,842	85	2,425					15	417

Bid Date -

**** TOTALS PAGE (LBS) ****

BUILDING - 3		STRUCTURE TOTAL		STRAIGHT		LIGHT BENT		HEAVY BENT		STOCK/MILL	
SIZE	%	Weight	%	Weight	%	Weight	%	Weight	%	Weight	
#3 Gr 60	100	21,331			17	3,614			83	17,717	
#4 Gr 60	100	24,791	44	10,904	29	7,261			27	6,626	
#5 Gr 60	100	72,431	46	33,060	1	845	48	34,855	5	3,671	
#6 Gr 60	100	122,267	100	122,267							
#7 Gr 60	100	130,903	33	43,640			67	87,263			
#8 Gr 60	100	1,602	100	1,602							
#9 Gr 60	100	31,478	9	2,720			91	28,758			
		Average Lbs per Linear Feet = 1.2706					Average Rebar Size = 6.11				
Total 202.5 Tons	100	404,803	53	214,193	3	11,720	37	150,876	7	28,014	

BUILDING - 3		>SPREAD FTG.		SubStructure		STRAIGHT		LIGHT BENT		HEAVY BENT		STOCK/MILL	
SIZE	%	Weight	%	Weight	%	Weight	%	Weight	%	Weight	%	Weight	
#5 Gr 60	100	1,364	100	1,364									
#6 Gr 60	100	4,734	100	4,734									
#7 Gr 60	100	11,197	100	11,197									
		Average Lbs per Linear Feet = 1.7404					Average Rebar Size = 6.57						
Total 8.7 Tons	100	17,295	100	17,295									

BUILDING - 3		>CONC.COLUMN		SubStructure		STRAIGHT		LIGHT BENT		HEAVY BENT		STOCK/MILL	
SIZE	%	Weight	%	Weight	%	Weight	%	Weight	%	Weight	%	Weight	
#3 Gr 60	100	3,614			100	3,614							
#9 Gr 60	100	28,758						100	28,758				
		Average Lbs per Linear Feet = 1.7915					Average Rebar Size = 8.33						
Total 16.2 Tons	100	32,372			11	3,614	89	28,758					

Bid Date -

**** TOTALS PAGE (LBS) ****

BUILDING - 3
 >WALL FOOTING ---- SubStructure ---- ----- STRAIGHT ----- LIGHT BENT ----- HEAVY BENT ----- STOCK/MILL -----

SIZE	%	Weight	%	Weight	%	Weight	%	Weight	%	Weight
#4 Gr 60	100	3,944			59	2,341			41	1,603
#5 Gr 60	100	2,374	13	310			87	2,064		
Average Lbs per Linear Feet = .7723					Average Rebar Size = 4.38					
Total 3.2 Tons	100	6,318	5	310	37	2,341	33	2,064	25	1,603

BUILDING - 3
 >MAT FOOTING ---- SubStructure ---- ----- STRAIGHT ----- LIGHT BENT ----- HEAVY BENT ----- STOCK/MILL -----

SIZE	%	Weight	%	Weight	%	Weight	%	Weight	%	Weight
#4 Gr 60	100	197			100	197				
#5 Gr 60	100	3,755	100	3,755						
Average Lbs per Linear Feet = 1.0146					Average Rebar Size = 4.95					
Total 2.0 Tons	100	3,952	95	3,755	5	197				

BUILDING - 3
 >ELEVATOR PIT ---- SubStructure ---- ----- STRAIGHT ----- LIGHT BENT ----- HEAVY BENT ----- STOCK/MILL -----

SIZE	%	Weight	%	Weight	%	Weight	%	Weight	%	Weight
#4 Gr 60	100	591			55	324			45	267
#5 Gr 60	100	4,310	59	2,554			41	1,756		
#8 Gr 60	100	1,602	100	1,602						
#9 Gr 60	100	2,720	100	2,720						
Average Lbs per Linear Feet = 1.4373					Average Rebar Size = 6.64					
Total 4.7 Tons	100	9,223	75	6,876	4	324	19	1,756	3	267

Bid Date -

**** TOTALS PAGE (LBS) ****

**BUILDING - 3
 >CONC. WALL**

	---- SubStructure ----		----- STRAIGHT -----		----- LIGHT BENT -----		----- HEAVY BENT -----		----- STOCK/MILL -----	
SIZE	%	Weight	%	Weight	%	Weight	%	Weight	%	Weight
#4 Gr 60	100	10,367	19	1,956	36	3,762			45	4,649
#5 Gr 60	100	12,066	89	10,717	7	807	4	542		
Average Lbs per Linear Feet = .8282					Average Rebar Size = 4.54					
Total 11.3 Tons	100	22,433	56	12,673	20	4,569	2	542	21	4,649

**BUILDING - 3
 >SOG**

	---- SubStructure ----		----- STRAIGHT -----		----- LIGHT BENT -----		----- HEAVY BENT -----		----- STOCK/MILL -----	
SIZE	%	Weight	%	Weight	%	Weight	%	Weight	%	Weight
#3 Gr 60	100	17,717							100	17,717
#4 Gr 60	100	744			86	637			14	107
#5 Gr 60	100	49					100	49		
Average Lbs per Linear Feet = .3834					Average Rebar Size = 3.05					
Total 9.3 Tons	100	18,510			3	637		49	96	17,824

**BUILDING - 3
 >CMU WALL**

	---- SubStructure ----		----- STRAIGHT -----		----- LIGHT BENT -----		----- HEAVY BENT -----		----- STOCK/MILL -----	
SIZE	%	Weight	%	Weight	%	Weight	%	Weight	%	Weight
#4 Gr 60	100	8,948	100	8,948						
#5 Gr 60	100	8,176	44	3,611		38	10	856	45	3,671
Average Lbs per Linear Feet = .8064					Average Rebar Size = 4.48					
Total 8.6 Tons	100	17,124	73	12,559		38	5	856	21	3,671

Bid Date -

**** TOTALS PAGE (LBS) ****

BUILDING - 3
 >UPPER LEVEL ---- SubStructure ---- ----- STRAIGHT ----- LIGHT BENT ----- HEAVY BENT ----- STOCK/MILL -----

SIZE	%	Weight	%	Weight	%	Weight	%	Weight	%	Weight
#5 Gr 60	100	40,337	27	10,749			73	29,588		
#6 Gr 60	100	117,533	100	117,533						
#7 Gr 60	100	119,706	27	32,443			73	87,263		
Average Lbs per Linear Feet = 1.5817					Average Rebar Size = 6.29					
Total 138.8 Tons	100	277,576	58	160,725			42	116,851		

GARAGE-A
 STRUCTURE TOTAL ---- STRAIGHT ----- LIGHT BENT ----- HEAVY BENT ----- STOCK/MILL -----

SIZE	%	Weight	%	Weight	%	Weight	%	Weight	%	Weight
#3 Gr 60	100	1,374			7	96			93	1,278
#4 Gr 60	100	1,763			29	508			71	1,255
Average Lbs per Linear Feet = .4985					Average Rebar Size = 3.56					
Total 1.6 Tons	100	3,137			19	604			81	2,533

GARAGE-A
 >CONT. FTG ---- SubStructure ---- ----- STRAIGHT ----- LIGHT BENT ----- HEAVY BENT ----- STOCK/MILL -----

SIZE	%	Weight	%	Weight	%	Weight	%	Weight	%	Weight
#4 Gr 60	100	1,523			33	508			67	1,015
Average Lbs per Linear Feet = .6680					Average Rebar Size = 4.00					
Total .8 Tons	100	1,523			33	508			67	1,015

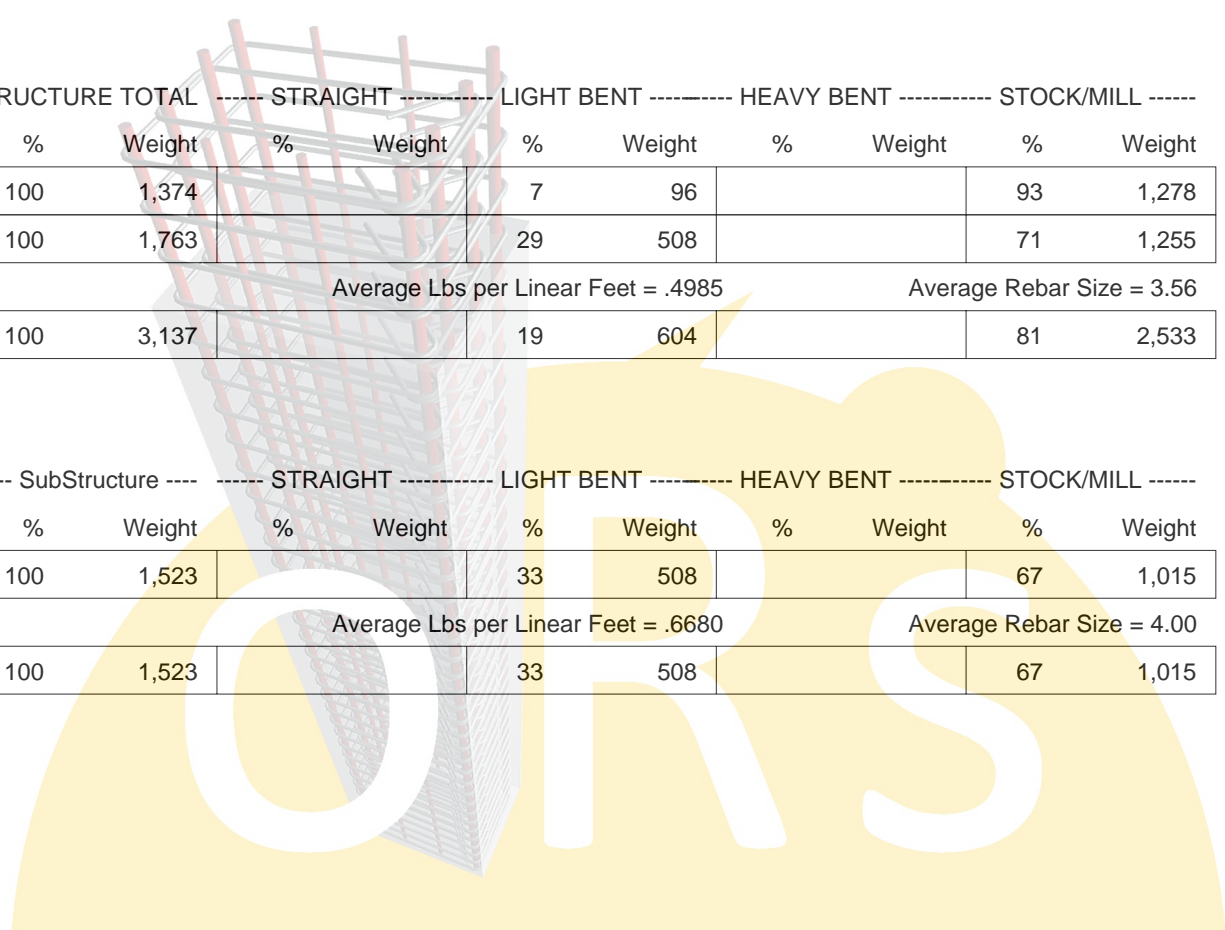
Bid Date -

**** TOTALS PAGE (LBS) ****

GARAGE-A >SOG										
---- SubStructure ----			----- STRAIGHT -----		----- LIGHT BENT -----		----- HEAVY BENT -----		----- STOCK/MILL -----	
SIZE	%	Weight	%	Weight	%	Weight	%	Weight	%	Weight
#3 Gr 60	100	1,374			7	96			93	1,278
#4 Gr 60	100	240							100	240
Average Lbs per Linear Feet = .4021					Average Rebar Size = 3.15					
Total .9 Tons	100	1,614			6	96			94	1,518

GARAGE-B										
STRUCTURE TOTAL			----- STRAIGHT -----		----- LIGHT BENT -----		----- HEAVY BENT -----		----- STOCK/MILL -----	
SIZE	%	Weight	%	Weight	%	Weight	%	Weight	%	Weight
#3 Gr 60	100	1,374			7	96			93	1,278
#4 Gr 60	100	1,763			29	508			71	1,255
Average Lbs per Linear Feet = .4985					Average Rebar Size = 3.56					
Total 1.6 Tons	100	3,137			19	604			81	2,533

GARAGE-B >CONT. FTG										
---- SubStructure ----			----- STRAIGHT -----		----- LIGHT BENT -----		----- HEAVY BENT -----		----- STOCK/MILL -----	
SIZE	%	Weight	%	Weight	%	Weight	%	Weight	%	Weight
#4 Gr 60	100	1,523			33	508			67	1,015
Average Lbs per Linear Feet = .6680					Average Rebar Size = 4.00					
Total .8 Tons	100	1,523			33	508			67	1,015



Bid Date -

**** TOTALS PAGE (LBS) ****

GARAGE-B >SOG		---- SubStructure ----		----- STRAIGHT -----		----- LIGHT BENT -----		----- HEAVY BENT -----		----- STOCK/MILL -----	
SIZE	%	Weight	%	Weight	%	Weight	%	Weight	%	Weight	
#3 Gr 60	100	1,374			7	96			93	1,278	
#4 Gr 60	100	240							100	240	
Average Lbs per Linear Feet = .4021						Average Rebar Size = 3.15					
Total .9 Tons	100	1,614			6	96			94	1,518	

POOLHOUSE		STRUCTURE TOTAL		----- STRAIGHT -----		----- LIGHT BENT -----		----- HEAVY BENT -----		----- STOCK/MILL -----	
SIZE	%	Weight	%	Weight	%	Weight	%	Weight	%	Weight	
#3 Gr 60	100	376							100	376	
#4 Gr 60	100	1,319	1	16	38	501			61	802	
#5 Gr 60	100	741	44	325			56	416			
Average Lbs per Linear Feet = .6611						Average Rebar Size = 4.15					
Total 1.3 Tons	100	2,436	14	341	21	501	17	416	48	1,178	

POOLHOUSE >CONT. FTG		---- SubStructure ----		----- STRAIGHT -----		----- LIGHT BENT -----		----- HEAVY BENT -----		----- STOCK/MILL -----	
SIZE	%	Weight	%	Weight	%	Weight	%	Weight	%	Weight	
#4 Gr 60	100	1,025			22	223			78	802	
#5 Gr 60	100	741	44	325			56	416			
Average Lbs per Linear Feet = .7867						Average Rebar Size = 4.42					
Total .9 Tons	100	1,766	18	325	13	223	24	416	45	802	

Bid Date -

**** TOTALS PAGE (LBS) ****

POOLHOUSE >SOG										
	---- SubStructure ----		----- STRAIGHT -----		----- LIGHT BENT -----		----- HEAVY BENT -----		----- STOCK/MILL -----	
SIZE	%	Weight	%	Weight	%	Weight	%	Weight	%	Weight
#3 Gr 60	100	376							100	376
#4 Gr 60	100	294	5	16	95	278				
Average Lbs per Linear Feet = .4652					Average Rebar Size = 3.44					
Total .4 Tons	100	670	2	16	41	278			56	376

SITWORK										
	STRUCTURE TOTAL		----- STRAIGHT -----		----- LIGHT BENT -----		----- HEAVY BENT -----		----- STOCK/MILL -----	
SIZE	%	Weight	%	Weight	%	Weight	%	Weight	%	Weight
#3 Gr 60	100	745			100	745				
#4 Gr 60	100	1,202							100	1,202
#5 Gr 60	100	1,145					100	1,145		
Average Lbs per Linear Feet = .6338					Average Rebar Size = 4.13					
Total 1.6 Tons	100	3,092			24	745	37	1,145	39	1,202

GRAND TOTALS										
	----- TOTAL -----		----- STRAIGHT -----		----- LIGHT BENT -----		----- HEAVY BENT -----		----- STOCK/MILL -----	
SIZE	%	Weight	%	Weight	%	Weight	%	Weight	%	Weight
#3 Gr 60	100	63,643			12	7,695			88	55,948
#4 Gr 60	100	85,038	22	18,419	27	23,067			51	43,552
#5 Gr 60	100	154,087	55	84,199	1	1,382	40	61,748	4	6,758
#6 Gr 60	100	233,619	100	232,747				872		
#7 Gr 60	100	182,530	40	72,751			60	109,779		
#8 Gr 60	100	4,272	100	4,272						
#9 Gr 60	100	47,662	6	2,720			94	44,942		
Average Lbs per Linear Feet = 1.0938					Average Rebar Size = 5.77					
Total 385.5 Tons	100	770,851	54	415,108	4	32,144	28	217,341	14	106,258